



To: All Authorized Lamborghini Dealers and Service Centers  
From: Customer Service Department  
Re: Positioning of a water cooling hose  
Date: 22/01/10  
Pages: 7

**Subject:**

Positioning of a water cooling hose (p/no 410819370)

**Model/VINs involved:**

Murciélago Coupé from VIN 1900 to VIN 3838

**Warning:** some vehicles included in this VIN range may not be affected, so check carefully on the Lamborghini WEB Portal ( at the section named VIN Info) if the cars in your workshop or in your eventual stock are effectively affected before performing any other operation.

**Information for the field**

As a result of a continuous product monitoring, Automobili Lamborghini S.p.A. has found that in some vehicles an incorrect positioning of a water cooling hose may cause engine coolant leakages

**Solution for the field**

Positioning of a water cooling hose (p/no 410819370)

**Spare parts**

Description	Part number	Q.ty
Clamp	N 90409501	1

**Information for warranty claims**

See the **Available Campaigns** section on the Lamborghini Warranty Portal.

- **Campaign Code:** L824-A.01.10 / L147.A.01.10
- **Campaign Description** Positioning of a water cooling hose
- **Cost Code:** 50
- **Component code:** CCA0110
- **Trouble code:** 220
- **Labour Code:** CCA0110100
- **Labour Time:** 1 hr.

Fill out the Service and Recall Campaign section in the warranty booklet, which is shown in the figure below.

---

*The procedures and information published herein are strictly confidential and are intended exclusively for recognized professionals and persons who are authorized to receive said information. All copyrights are the property of Automobili Lamborghini S.p.A, as per copyright law. The company reserves the right to make revisions and modifications. The following are prohibited: reprinting, reproduction, forwarding to unauthorized persons and/or third parties, and either partial or complete translation, without the express written consent of Automobili Lamborghini S.p.A.*



**Automobili Lamborghini S.p.A.**  
**Campagne service assistenza e campagne di richiamo / Service-und Rückrufaktion / Service and Recall Campaign**  
**Service et campagne de rappel / Campaña de Servicio y Llamada a Taller**

<p>Service/Service Service/Service Servicio <input type="checkbox"/>    Richiamo/Rückruf Recall/Rappel Llamada a Taller <input type="checkbox"/></p> <p>Numero/Nummer Number/Numéro Número <input type="text"/> <input type="text"/> <input type="text"/> <input type="text"/> <input type="text"/> <input type="text"/> <input type="text"/> <input type="text"/> <input type="text"/> <input type="text"/> <input type="text"/></p> <p>Data/Datum/Date/Date/Fecha <input type="text"/> <input type="text"/> <input type="text"/> <input type="text"/> <input type="text"/> <input type="text"/></p> <p>Data riparazione/Reparaturdatum Repair Data/Date de réparation Fecha reparación <input type="text"/> <input type="text"/> <input type="text"/> <input type="text"/></p> <p>Eseguito dal Concessionario / Ausgeführt von der Vertragswerkstatt / Done by the Dealer Efectuado por el concesionario / Efectuado por el Concesionario</p> <p style="text-align: center;">Firma / Unterschrift / Signature / Signature / Firma</p> <hr/> <p>Service/Service Service/Service Servicio <input type="checkbox"/>    Richiamo/Rückruf Recall/Rappel Llamada a taller <input type="checkbox"/></p> <p>Numero/Nummer Number/Numéro Número <input type="text"/> <input type="text"/> <input type="text"/> <input type="text"/> <input type="text"/> <input type="text"/> <input type="text"/> <input type="text"/> <input type="text"/> <input type="text"/></p> <p>Data/Datum/Date/Date/Fecha <input type="text"/> <input type="text"/> <input type="text"/> <input type="text"/> <input type="text"/> <input type="text"/></p> <p>Data riparazione/Reparaturdatum Repair Data/Date de réparation Fecha reparación <input type="text"/> <input type="text"/> <input type="text"/> <input type="text"/></p> <p>Eseguito dal Concessionario / Ausgeführt von der Vertragswerkstatt / Done by the Dealer Efectuado por el concesionario / Efectuado por el Concesionario</p>	<p>Service/Service Service/Service Servicio <input type="checkbox"/>    Richiamo/Rückruf Recall/Rappel Llamada a Taller <input type="checkbox"/></p> <p>Numero/Nummer Number/Numéro Número <input type="text"/> <input type="text"/> <input type="text"/> <input type="text"/> <input type="text"/> <input type="text"/> <input type="text"/> <input type="text"/> <input type="text"/> <input type="text"/></p> <p>Data/Datum/Date/Date/Fecha <input type="text"/> <input type="text"/> <input type="text"/> <input type="text"/> <input type="text"/> <input type="text"/></p> <p>Data riparazione/Reparaturdatum Repair Data/Date de réparation Fecha reparación <input type="text"/> <input type="text"/> <input type="text"/> <input type="text"/></p> <p>Eseguito dal Concessionario / Ausgeführt von der Vertragswerkstatt / Done by the Dealer Efectuado por el concesionario / Efectuado por el Concesionario</p> <p style="text-align: center;">Firma / Unterschrift / Signature / Signature / Firma</p> <hr/> <p>Service/Service Service/Service Servicio <input type="checkbox"/>    Richiamo/Rückruf Recall/Rappel Llamada a taller <input type="checkbox"/></p> <p>Numero/Nummer Number/Numéro Número <input type="text"/> <input type="text"/> <input type="text"/> <input type="text"/> <input type="text"/> <input type="text"/> <input type="text"/> <input type="text"/> <input type="text"/> <input type="text"/></p> <p>Data/Datum/Date/Date/Fecha <input type="text"/> <input type="text"/> <input type="text"/> <input type="text"/> <input type="text"/> <input type="text"/></p> <p>Data riparazione/Reparaturdatum Repair Data/Date de réparation Fecha reparación <input type="text"/> <input type="text"/> <input type="text"/> <input type="text"/></p> <p>Eseguito dal Concessionario / Ausgeführt von der Vertragswerkstatt / Done by the Dealer Efectuado por el concesionario / Efectuado por el Concesionario</p>
--	---

## Description of required procedures



**WARNING!**

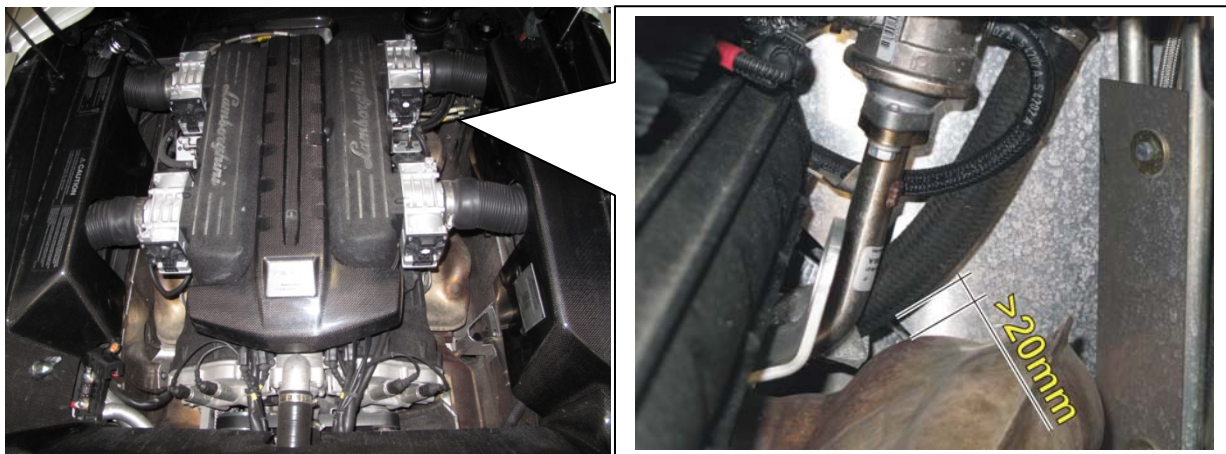
**Let the engine cool down completely and turn the ignition key to OFF before proceeding.**

*The procedures and information published herein are strictly confidential and are intended exclusively for recognized professionals and persons who are authorized to receive said information. All copyrights are the property of Automobili Lamborghini S.p.A, as per copyright law. The company reserves the right to make revisions and modifications. The following are prohibited: reprinting, reproduction, forwarding to unauthorized persons and/or third parties, and either partial or complete translation, without the express written consent of Automobili Lamborghini S.p.A.*



Check that the distance between the right exhaust manifold and the connecting hose running from the coolant tank to the cylinder head is higher than **20 mm**.

Even if this distance is higher than 20 mm, we recommend that you perform the operations described in this bulletin anyway.



**Fig. 1**

Preliminary procedures:

- Remove the lower engine bay (see Workshop Manual 081303, Section C).
- Remove the hose between the air filter and the front throttle body (013303).
- Using a syringe, empty the coolant tank. (Fig. 2).



**Fig. 2**

---

*The procedures and information published herein are strictly confidential and are intended exclusively for recognized professionals and persons who are authorized to receive said information. All copyrights are the property of Automobili Lamborghini S.p.A, as per copyright law. The company reserves the right to make revisions and modifications. The following are prohibited: reprinting, reproduction, forwarding to unauthorized persons and/or third parties, and either partial or complete translation, without the express written consent of Automobili Lamborghini S.p.A.*



- Open the spring clamp (yellow arrow - Fig. 3).
- Disconnect the EGR valve vacuum line (A - Fig. 3) from the pneumatic valve in the secondary air circuit.

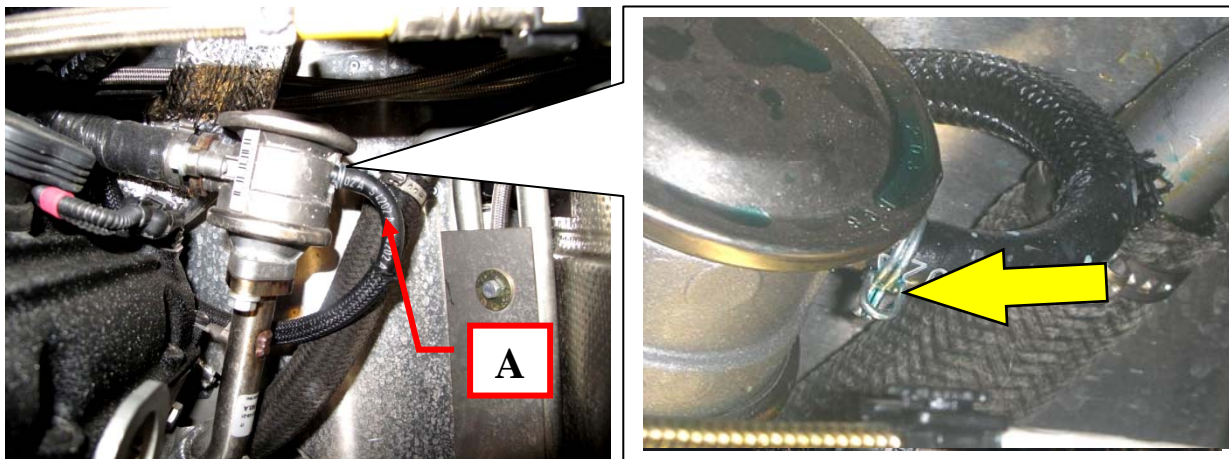


Fig. 3

- Using a pair of scissors, cut the clamp (B-Fig. 4) off the rubber hose leading to the coolant tank.

Before disconnecting the hose, place a basin under the vehicle to collect any coolant that may be released.



**Disconnect the hose (C-Fig. 4). Be careful of the coolant remaining in the circuit.**

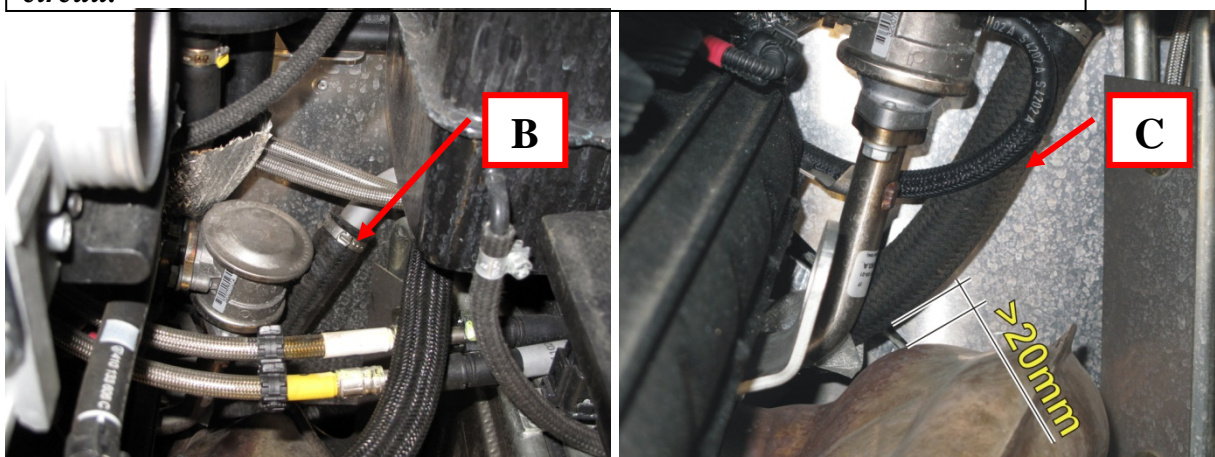
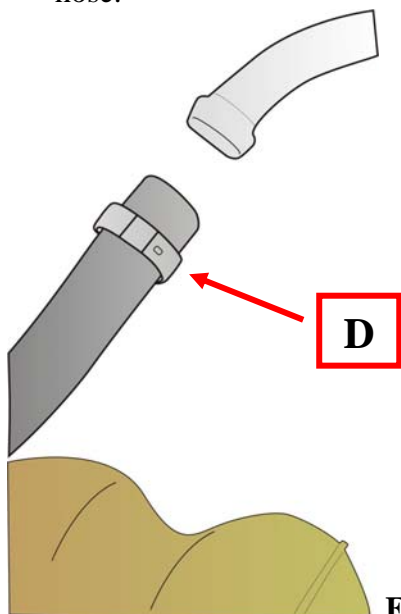


Fig. 4

*The procedures and information published herein are strictly confidential and are intended exclusively for recognized professionals and persons who are authorized to receive said information. All copyrights are the property of Automobili Lamborghini S.p.A, as per copyright law. The company reserves the right to make revisions and modifications. The following are prohibited: reprinting, reproduction, forwarding to unauthorized persons and/or third parties, and either partial or complete translation, without the express written consent of Automobili Lamborghini S.p.A.*

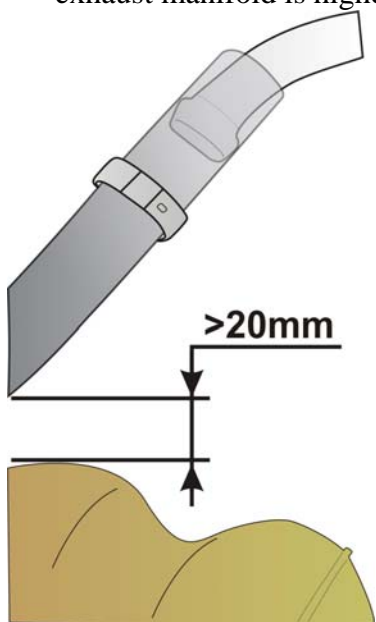
Repositioning the hose:

- Insert the clamp (**D-Fig. 5**) supplied as a spare part ( p/no N 90409501) onto the hose.



**Fig. 5**

- Fit the hose onto the connector until the distance between the hose and the exhaust manifold is higher than or equal to 20 mm.

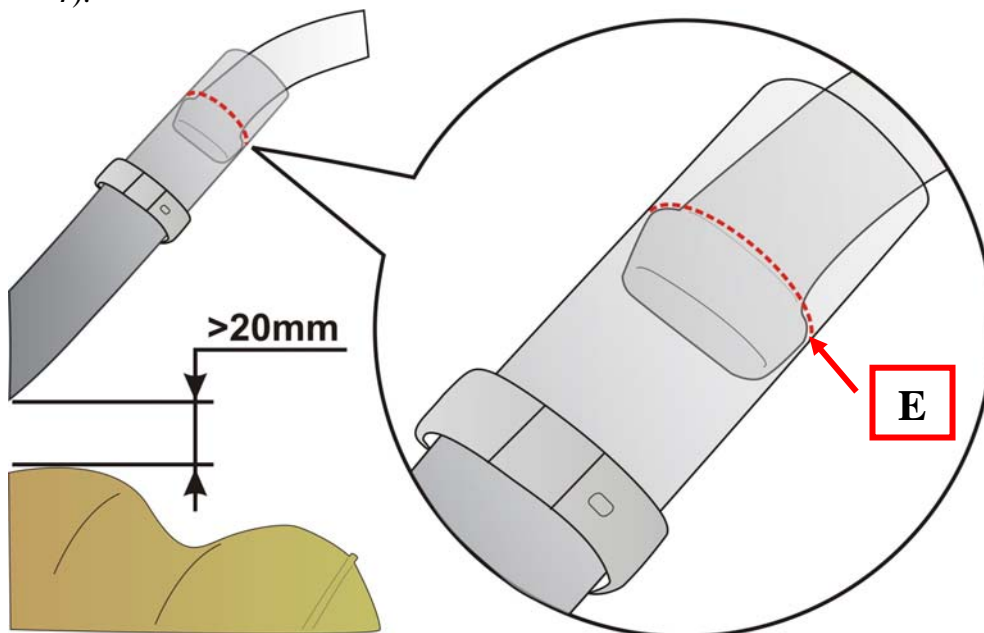


**Fig. 6**

---

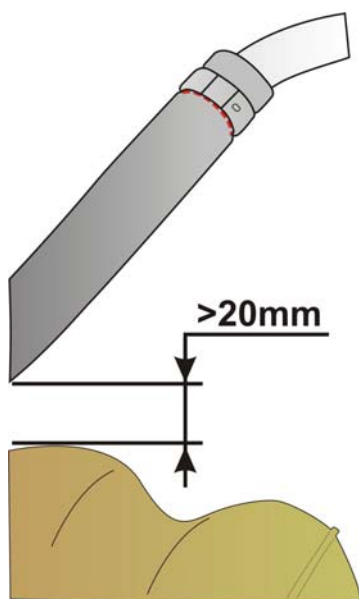
*The procedures and information published herein are strictly confidential and are intended exclusively for recognized professionals and persons who are authorized to receive said information. All copyrights are the property of Automobili Lamborghini S.p.A, as per copyright law. The company reserves the right to make revisions and modifications. The following are prohibited: reprinting, reproduction, forwarding to unauthorized persons and/or third parties, and either partial or complete translation, without the express written consent of Automobili Lamborghini S.p.A.*

- Feel the hose to locate the position of the upper edge of the connector (**E-Fig. 7**).



**Fig. 7**

- Using a marking pen, mark the position of the edge.
- Position the clamp at the mark. Make sure the clamp is immediately above the upper edge on the connector.
- Tighten the clamp.



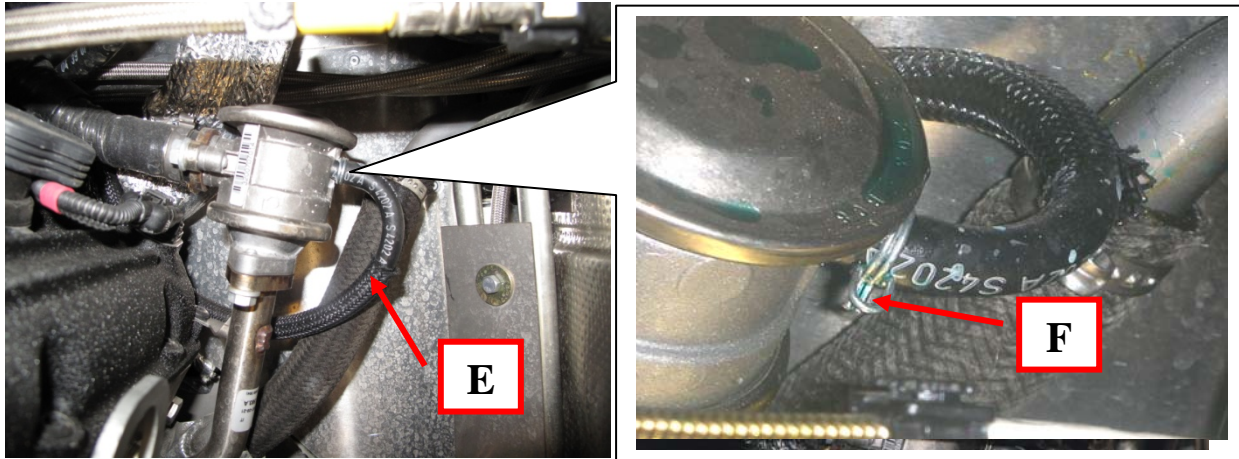
**Fig. 8**

---

*The procedures and information published herein are strictly confidential and are intended exclusively for recognized professionals and persons who are authorized to receive said information. All copyrights are the property of Automobili Lamborghini S.p.A, as per copyright law. The company reserves the right to make revisions and modifications. The following are prohibited: reprinting, reproduction, forwarding to unauthorized persons and/or third parties, and either partial or complete translation, without the express written consent of Automobili Lamborghini S.p.A.*



- Install the EGR line (**E-Fig. 9**) on the pneumatic valve in the secondary air circuit.
- Fasten the spring clamp that was previously removed (F-Fig. 9).



**Fig. 9**

- Install the hose between the air filter and the front throttle body (013305).
- Install the lower engine bay) (081305)
- Fill the coolant tank to the proper level.
- Start the vehicle and let it run for five minutes
- Shut off the engine and check the coolant level once again. Top up the level, if necessary.

Please contact your Area Manager if you require further information.

Yours sincerely  
Customer Service

---

*The procedures and information published herein are strictly confidential and are intended exclusively for recognized professionals and persons who are authorized to receive said information. All copyrights are the property of Automobili Lamborghini S.p.A, as per copyright law. The company reserves the right to make revisions and modifications. The following are prohibited: reprinting, reproduction, forwarding to unauthorized persons and/or third parties, and either partial or complete translation, without the express written consent of Automobili Lamborghini S.p.A.*